

The background is a dark blue field with a faint grid pattern. Two glowing blue circular patterns, resembling orbits or data paths, are positioned above and below the main text. Numerous small, bright blue dots are scattered across the grid, some connected by thin lines, suggesting a network or data visualization.

FOSTERING AN INNOVATIVE AUDIT FUNCTION

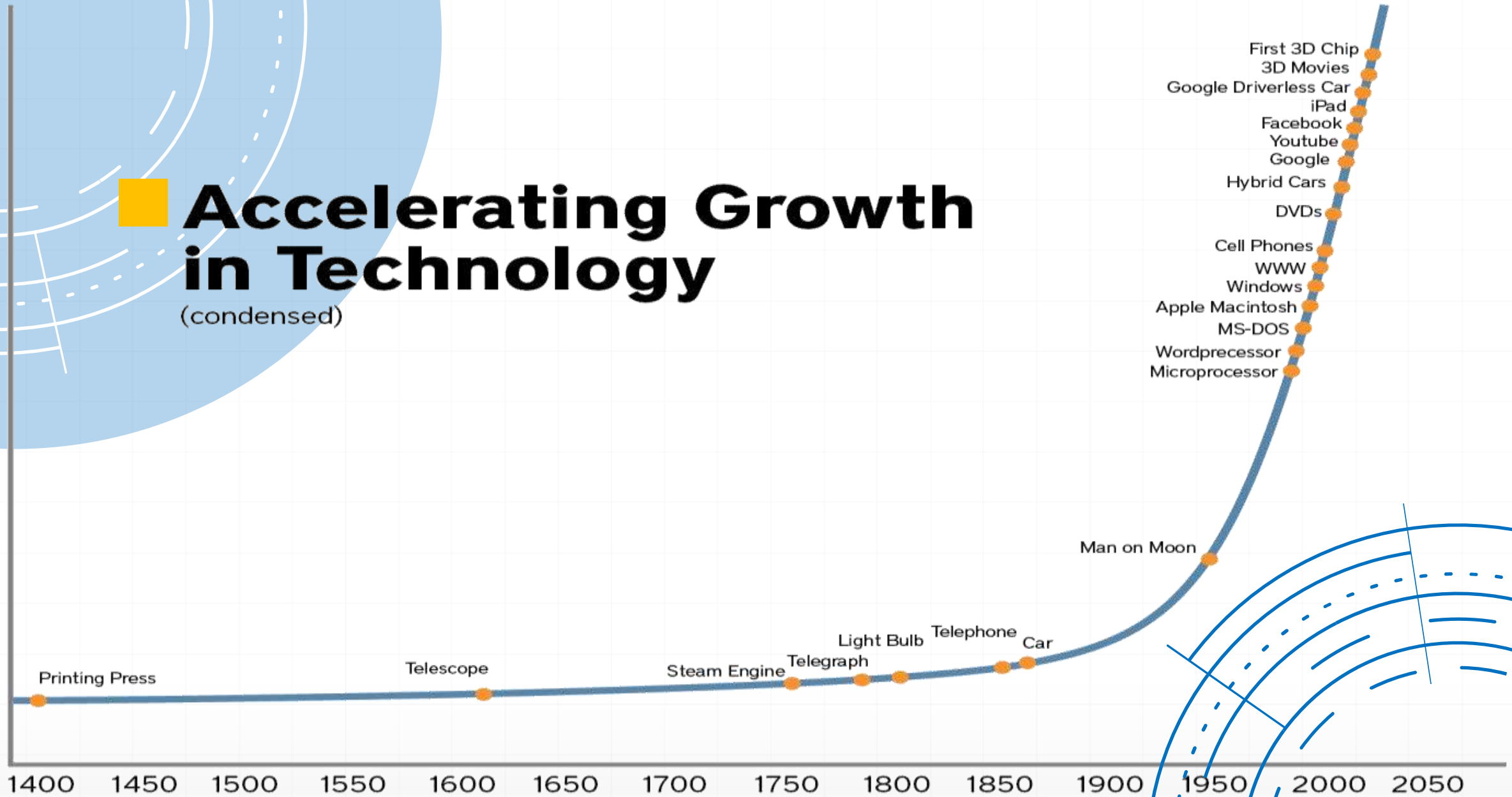
OCTOBER 29th 2021

PRESENTED BY:

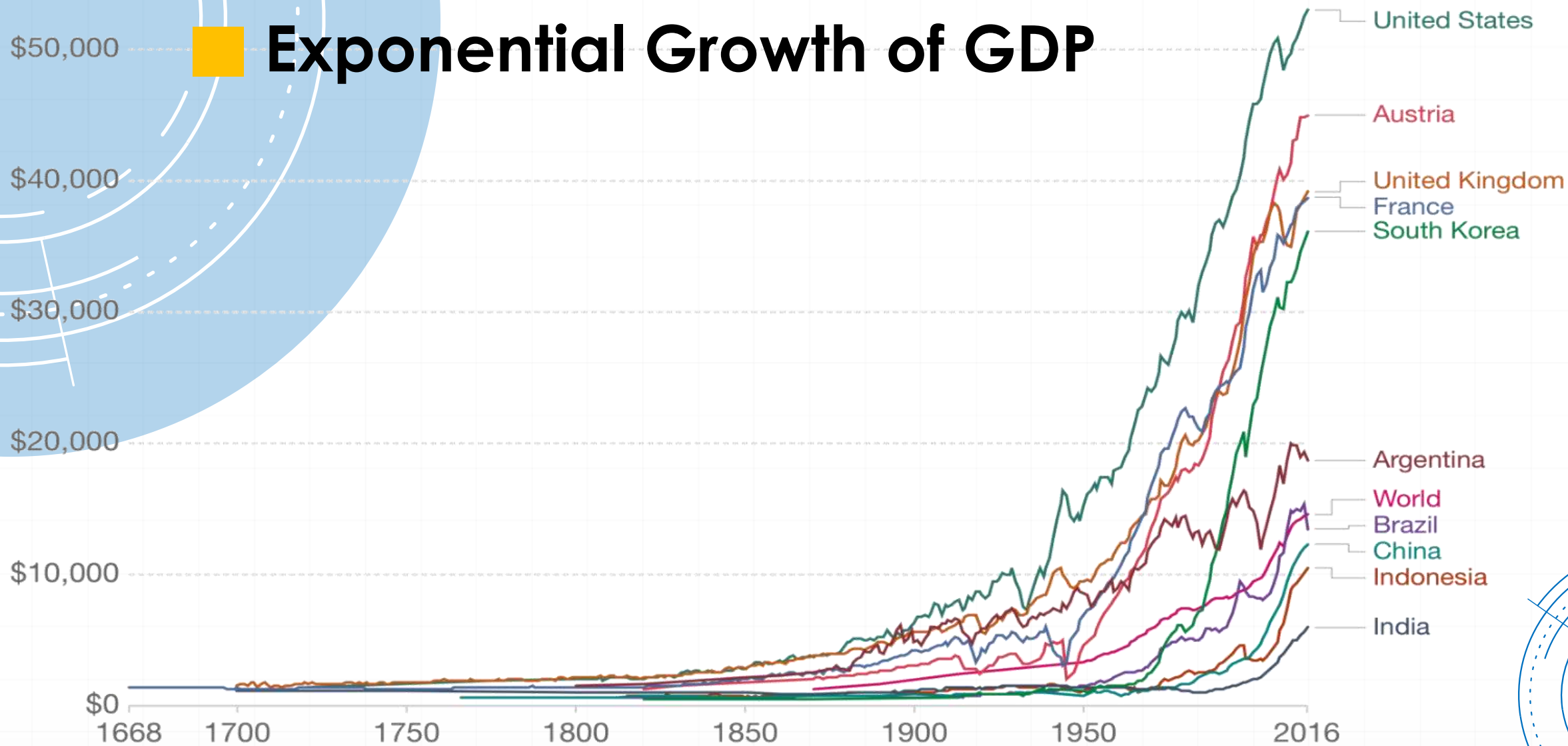
ANANG BASUKI, CIA

Accelerating Growth in Technology

(condensed)



Exponential Growth of GDP

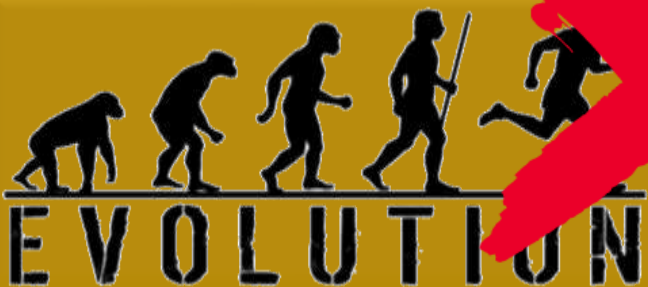


Source: Maddison Project Database (2018)

Note: These series are adjusted for price differences between countries using multiple benchmark years, and are therefore suitable for cross-country comparisons of income levels at different points in time.

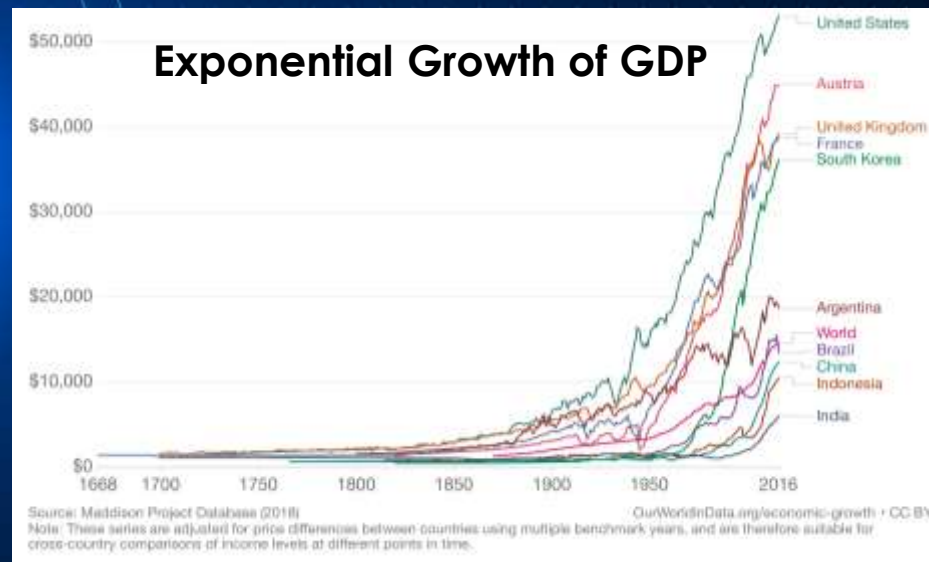
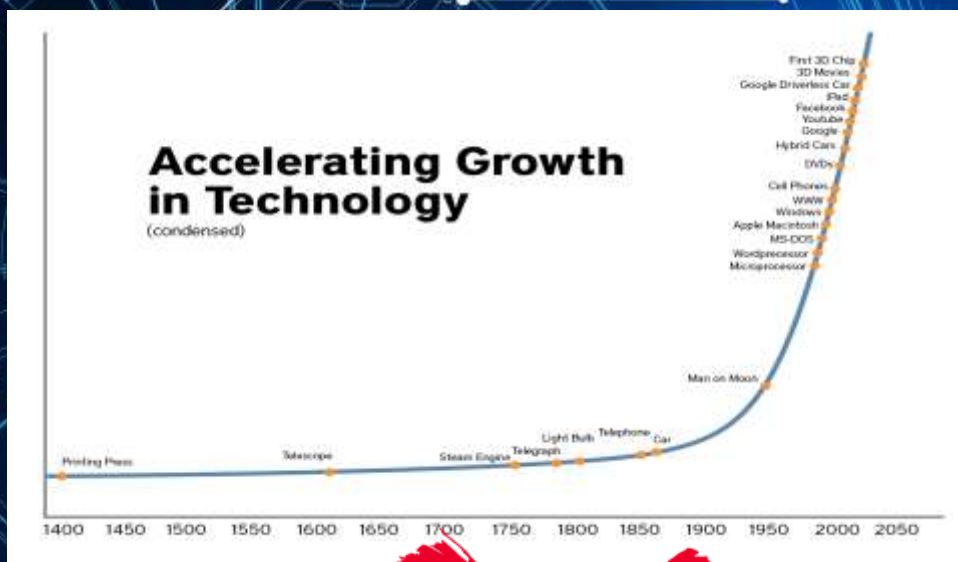
OurWorldInData.org/economic-growth • CC BY

Acceleration at The Speed of Change



Adapt or Die

Gradual development or changes in something over a period



REVOLUTION

Adapt or Die

Turnaround — a sudden, complete, or radical change in something

Digital Disruption

Industrial Revolution
4.0

V.U.C.A.

COVID 19





OLD **HOTEL** NETWORK

Since 1912
584 hotels



THE **DISRUPTOR**

Since 2008
34.000 cities in 191 countries




MATAHARI

Giant

DEBENHAMS

**CONVENTIONAL
SHOPPING**




tokopedia

 Shopee



**ONLINE
SHOPPING**

Walmart

Save money. Live better.



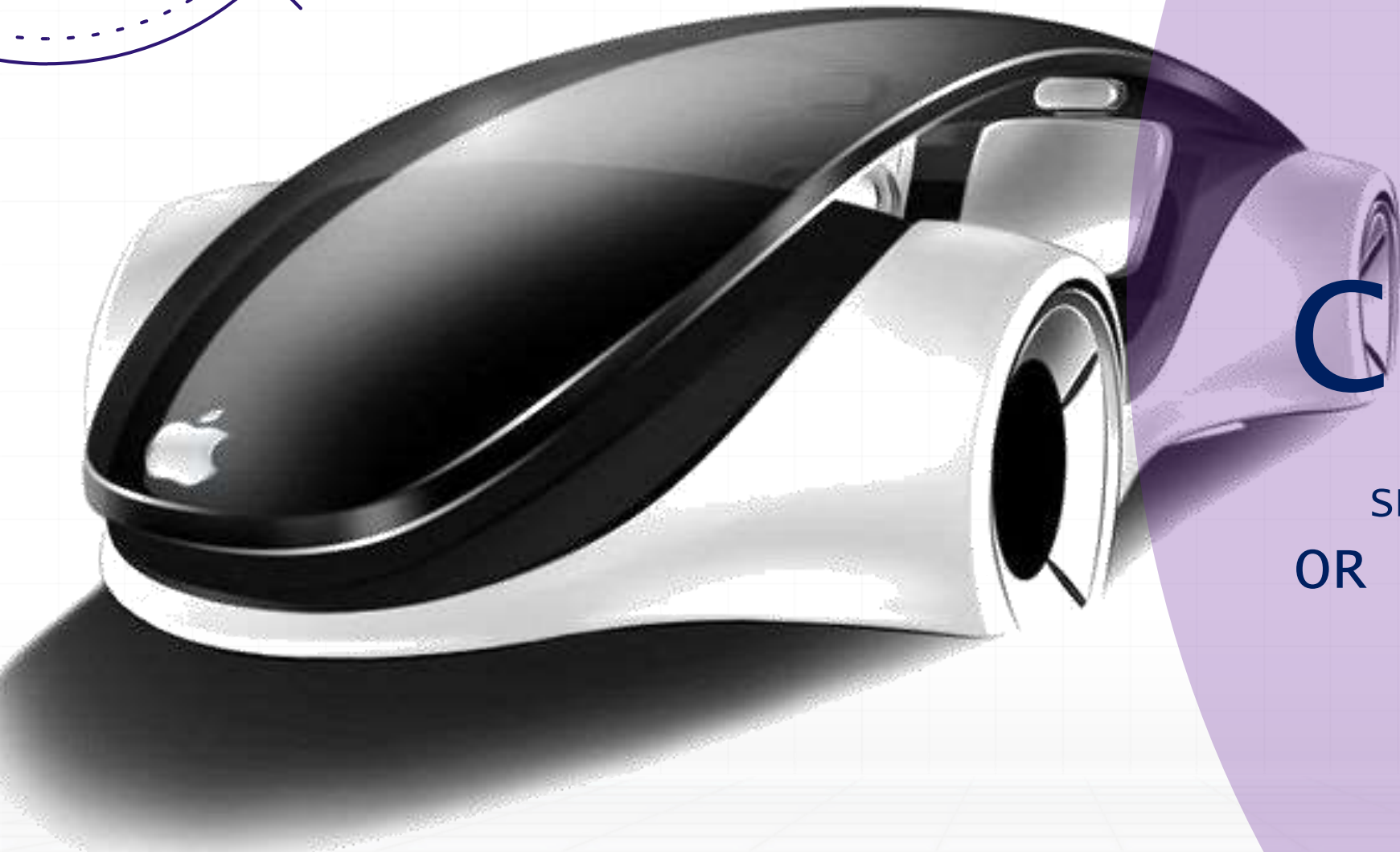
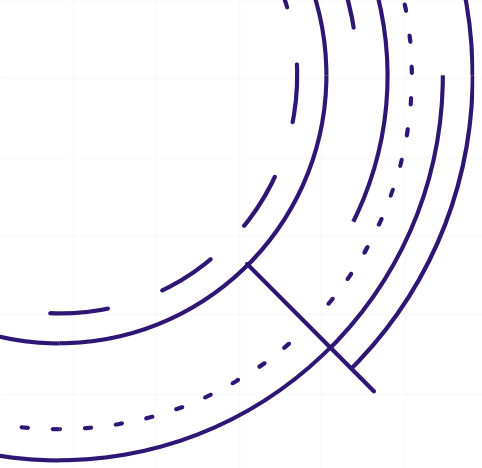
Jack Ma (2015):

“I bet in 10 years we’ll be bigger than Walmart on sales”.

“If Walmart want 10.000 new customers, they have to build a new warehouse and this and that. **For me, two servers**”.

Revenue Alibaba vs Walmart

	2015	2020	Growth (2015-2020):
• Walmart	USD 485,65 Billion	USD 532,96 Billion	• 9,74%
• Alibaba	USD 12,29 Billion	USD 109 Billion	• 786,90%



WORLD CHANGES

SHOULD WE CHANGE ?
OR CEASE TO EXIST ?

- Cybersecurity and data security
 - Regulatory change and compliance
 - Digitalization, new Tech. & AI
- Financial, capital and liquidity risk
 - Human Capital and Talent Management



Organization's innovation



Global Risk and Economic Uncertainty



Human Resource



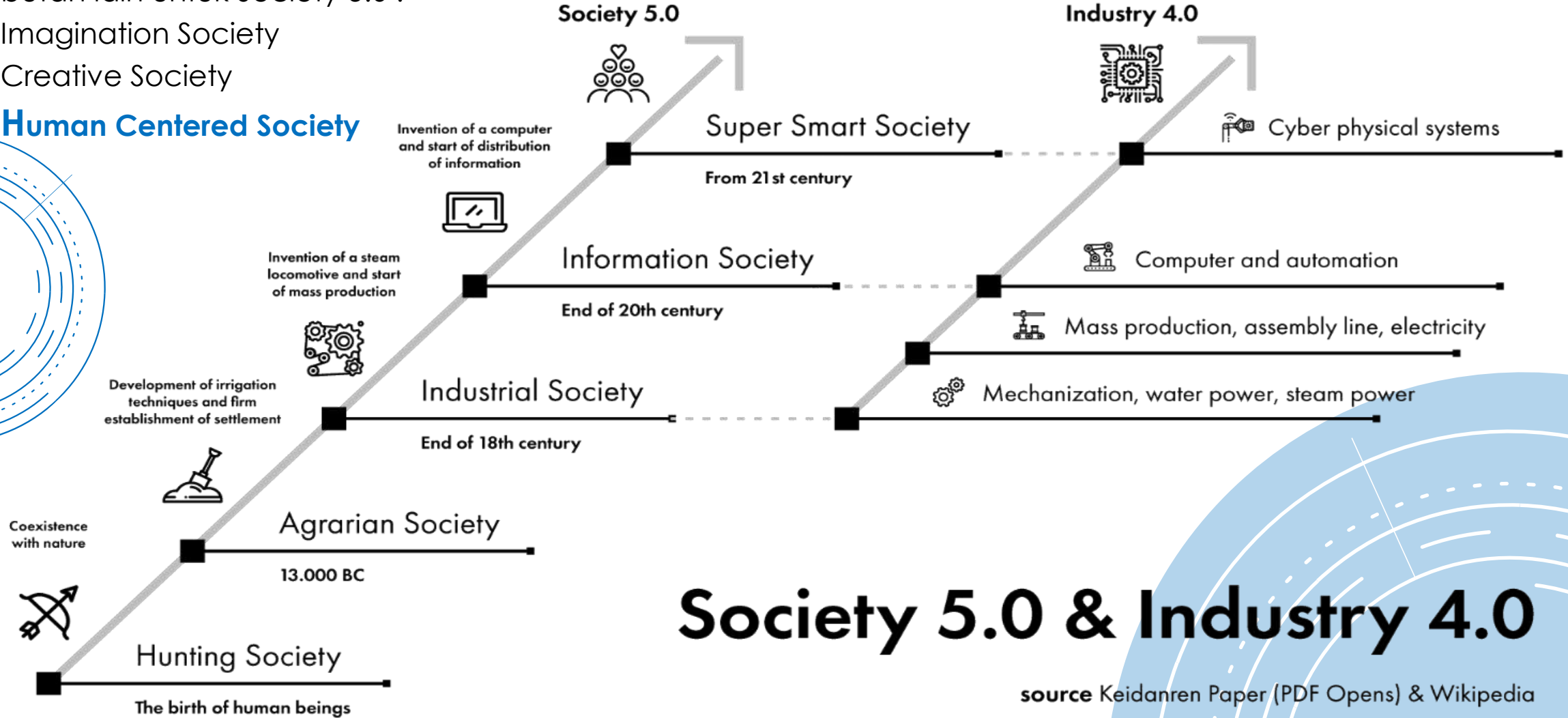
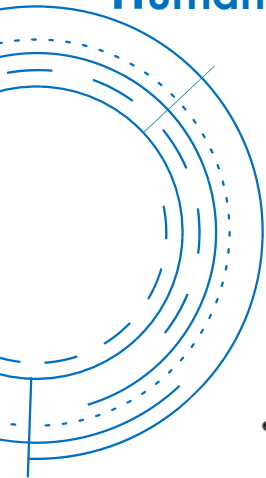
Climate Change



Society 5.0

Sebutan lain untuk Society 5.0 :

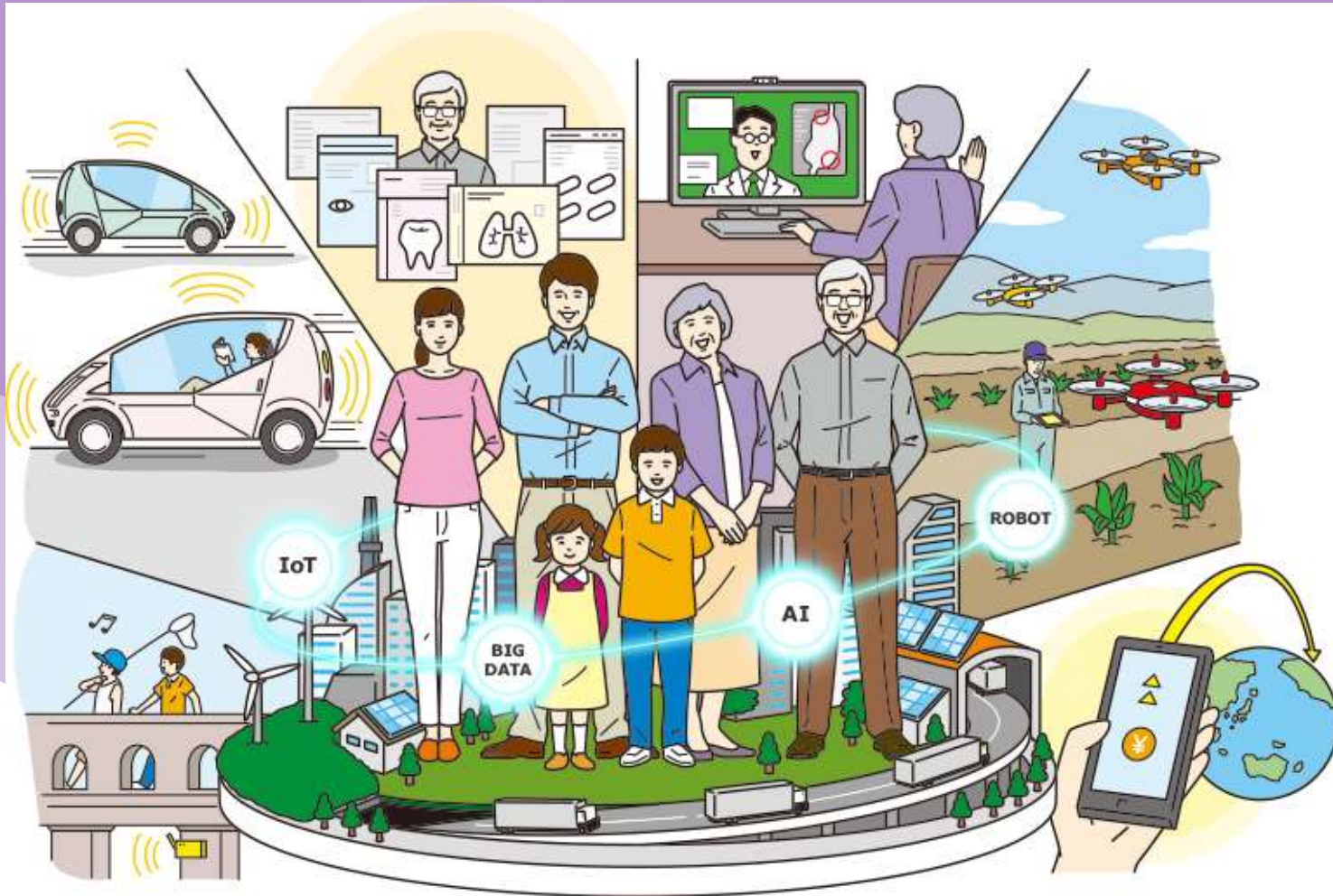
- Imagination Society
- Creative Society
- **Human Centered Society**



Society 5.0 & Industry 4.0

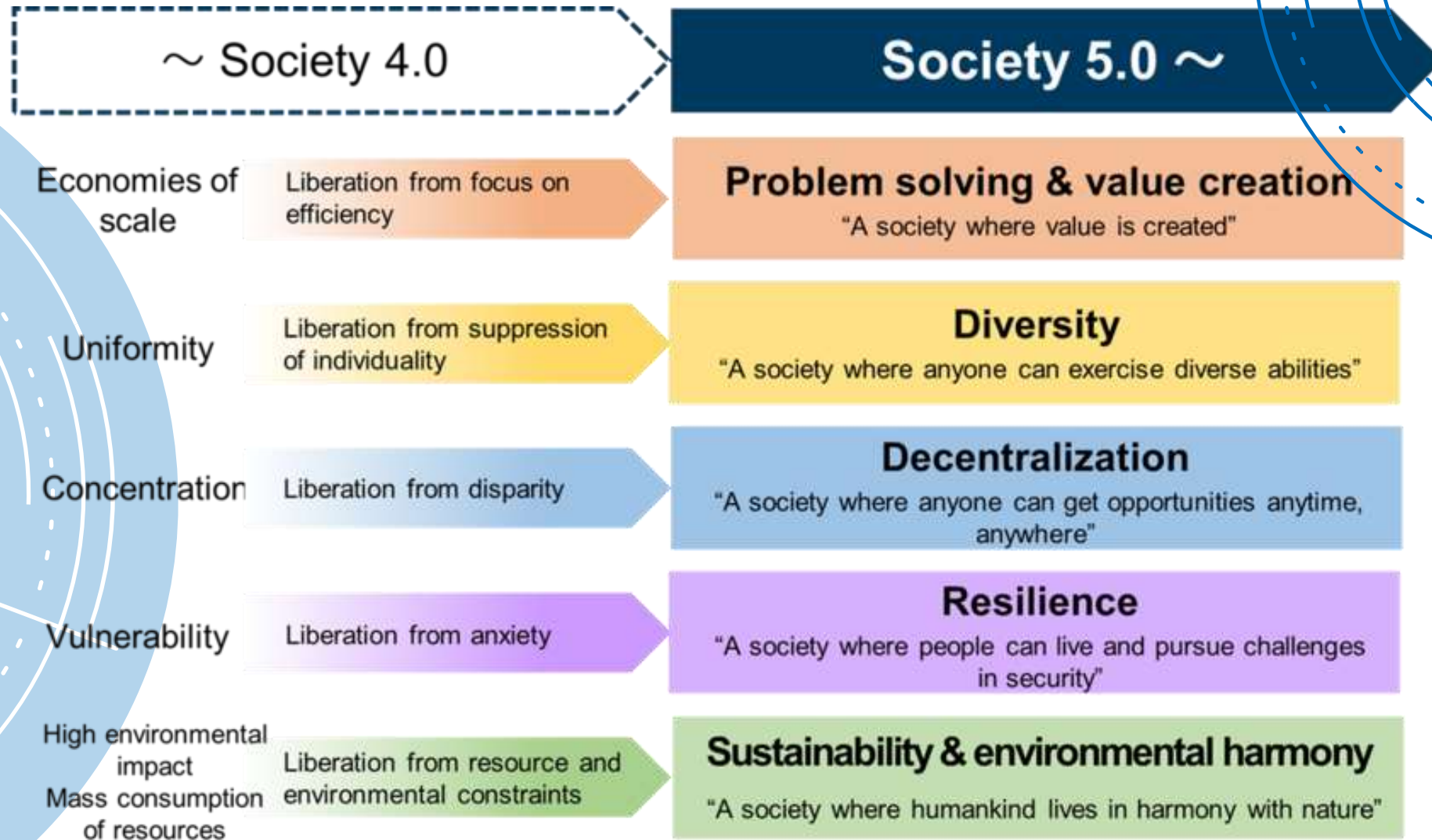
source Keidanren Paper (PDF Opens) & Wikipedia

Society 5.0



Society 5.0 is “a **human-centered society** that balances economic advancement with the resolution of social problems by a system that highly integrates cyberspace and physical space”.

Society 5.0

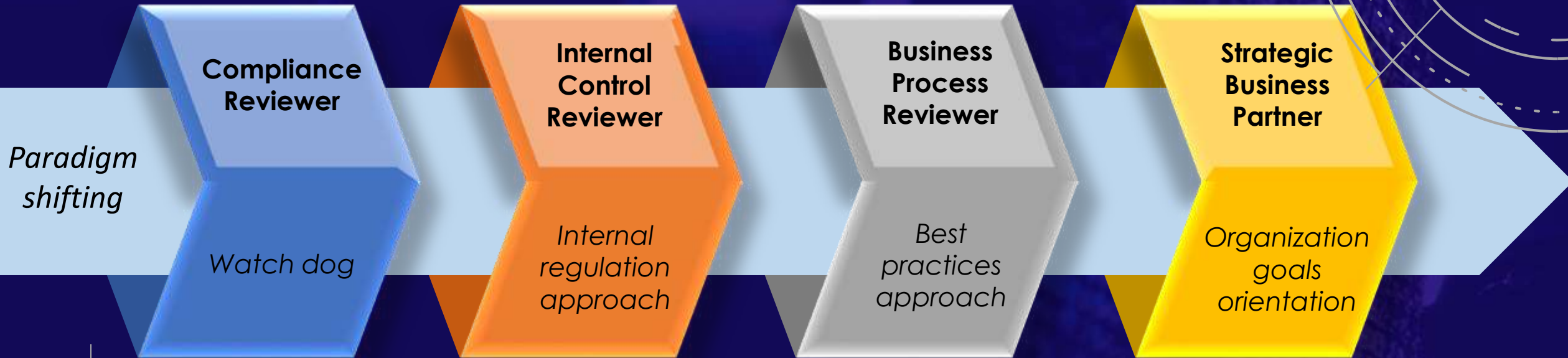


Source : World Economic Forum (WEF), 2019; Keidanren Policy & Action, 2018



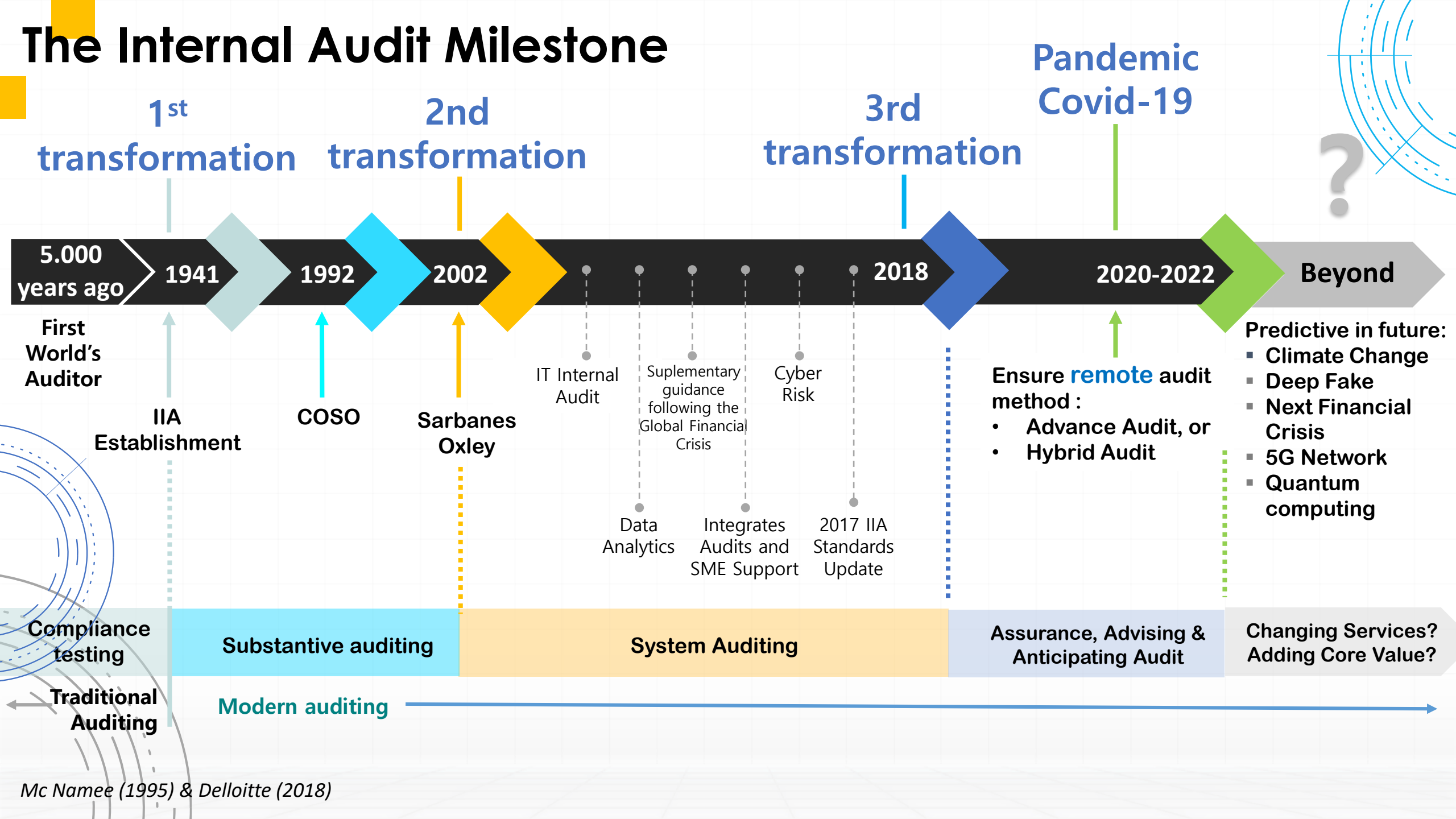
INTERNAL AUDIT ROLES & MILESTONE

The Role of Internal Auditor



Where are we ??

The Internal Audit Milestone



MANUAL

Processes



RPA

Robotic Process Automation

Cloud Auditing

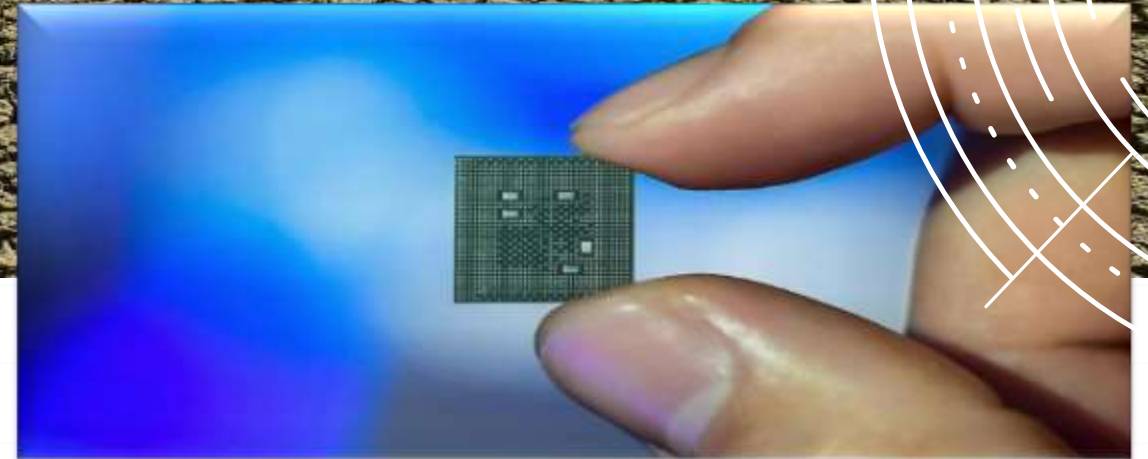
AI
Artificial Intelligence



CLIMATE CHANGE IMPACT ON GLOBAL SUPPLY CHAIN CRISIS

Is it real?

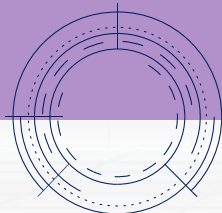
The worst drought in last 50 years due to climate change, predicted more frequent.



- TSMC as the market leader of chips production needs >150.000 ton water per day.
- Shortage of chips supply on global market, impacts on electronics, IT devices, cars productions, etc.



DEEP FAKE TECHNOLOGY



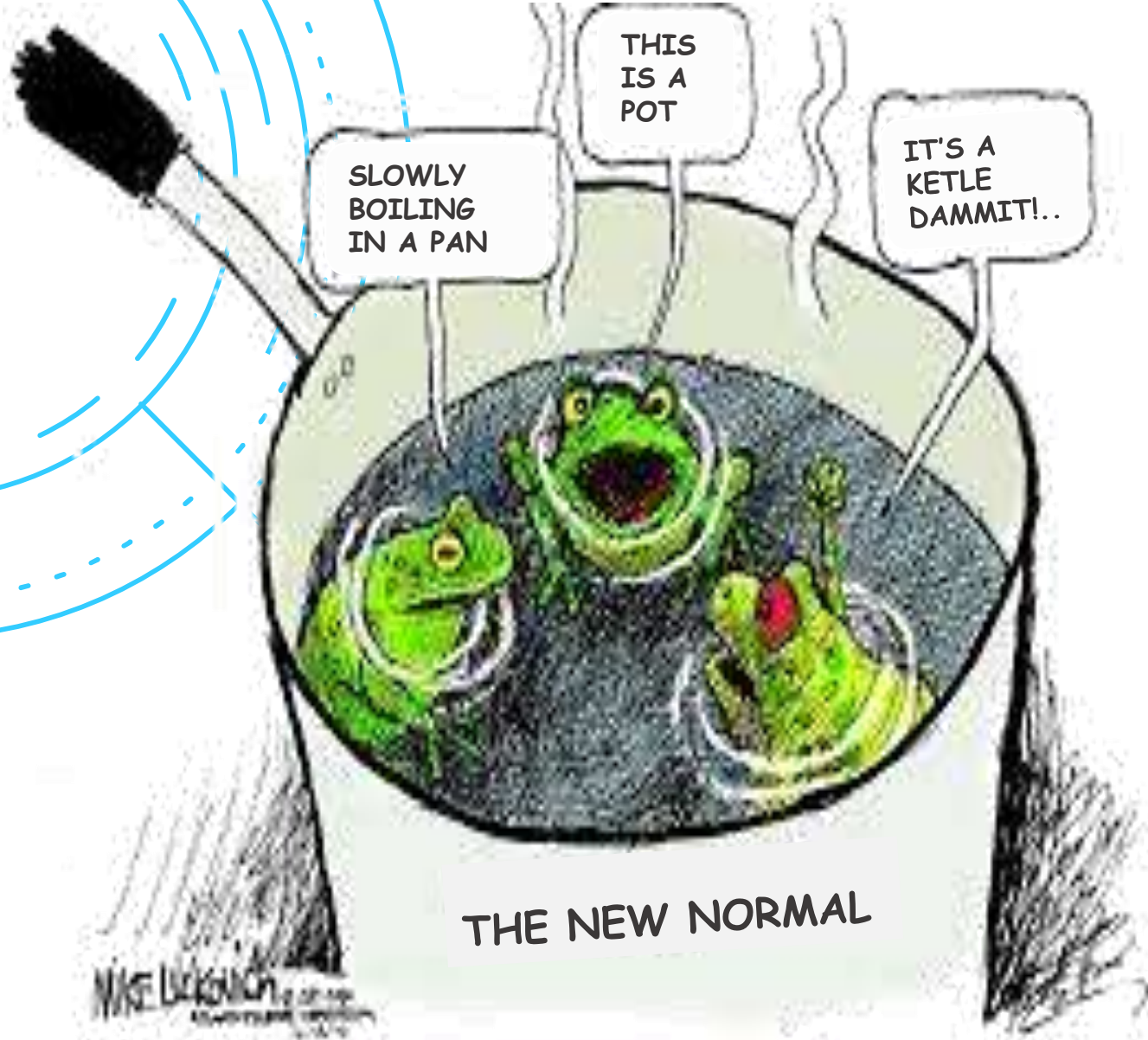
<https://www.youtube.com/watch?v=cQ54GDm1eL0>

What Do
they see in
You?





Don't Be A Frog In Boiling Water



What killed the frog?

Many of us would say the boiling water

But the truth is what killed the frog was its his own inability to decide when it had to jump out

Key Points :

1. Timing
2. Sensing
3. Environment

OR





INTERNAL AUDIT TRANSFORMATION



Quote dari **John F Kennedy**:

The Chinese use 2 characters to write **CRISIS** :

One represents **DANGER** dan the other represents **OPPORTUNITY**



“Wei”

“Ji”

In a crisis, be aware of the danger – but recognize the opportunity



WHO WANTS CHANGE?

WHO WANTS TO CHANGE?

What is Your Choice?

OBJECT

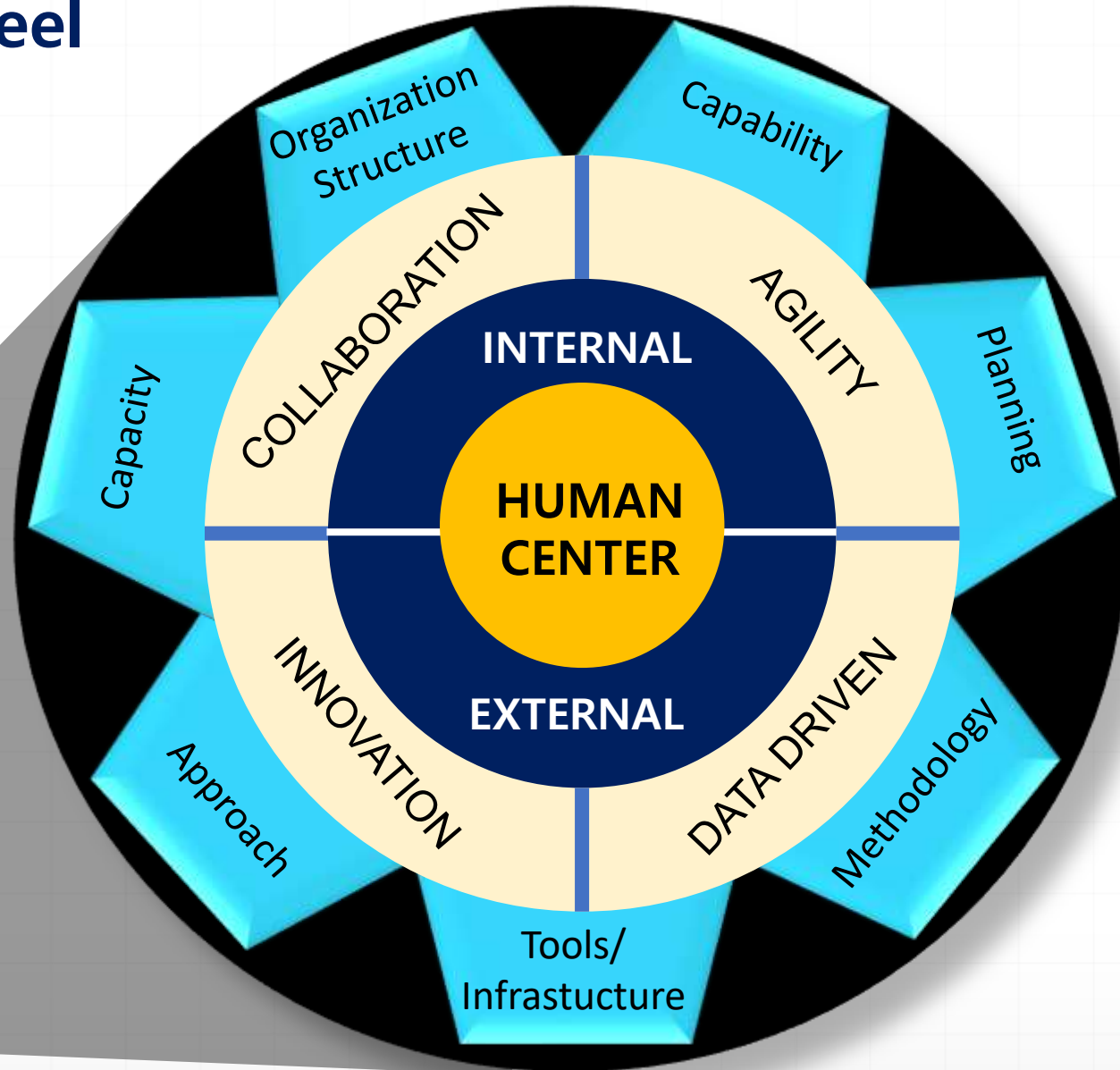
- FIXED MINDSET
- STAGNATE
- REACTIVE
- FRAGILITY

SUBJECT

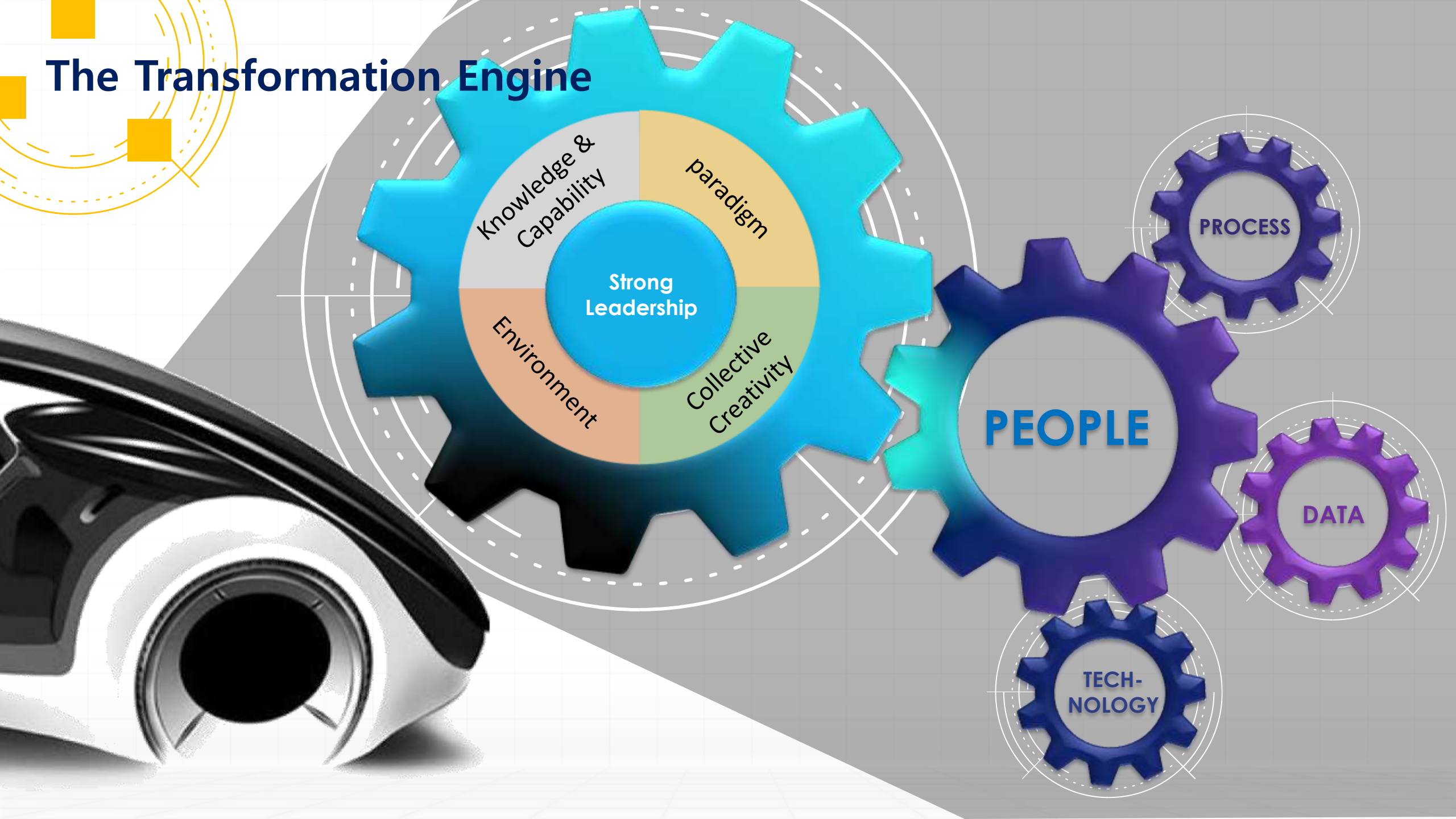
- GROWTH MINDSET
- ADAPTIVE / AGILITY
- INNOVATION
- RESILIENCE



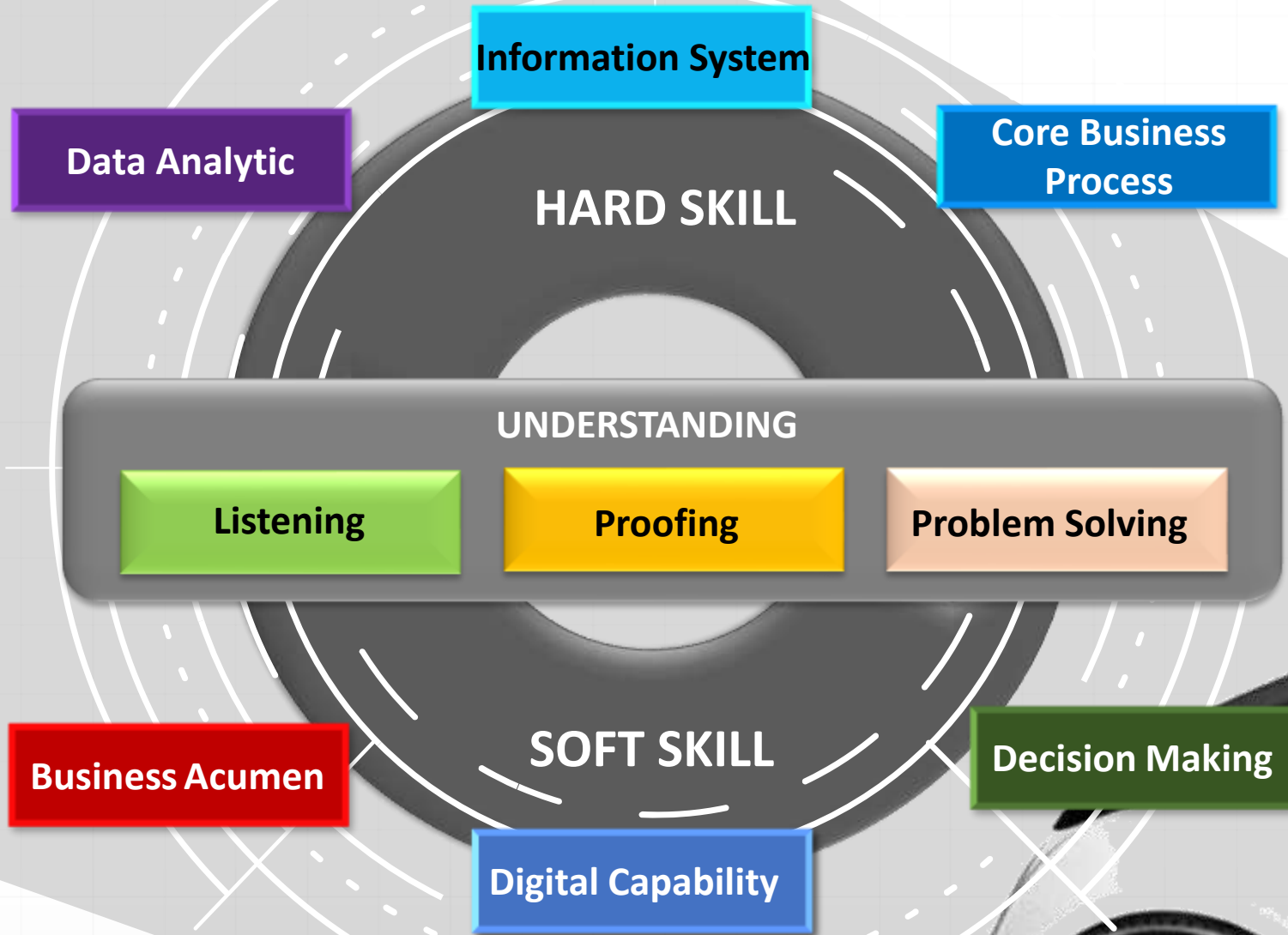
The Transformation Wheel



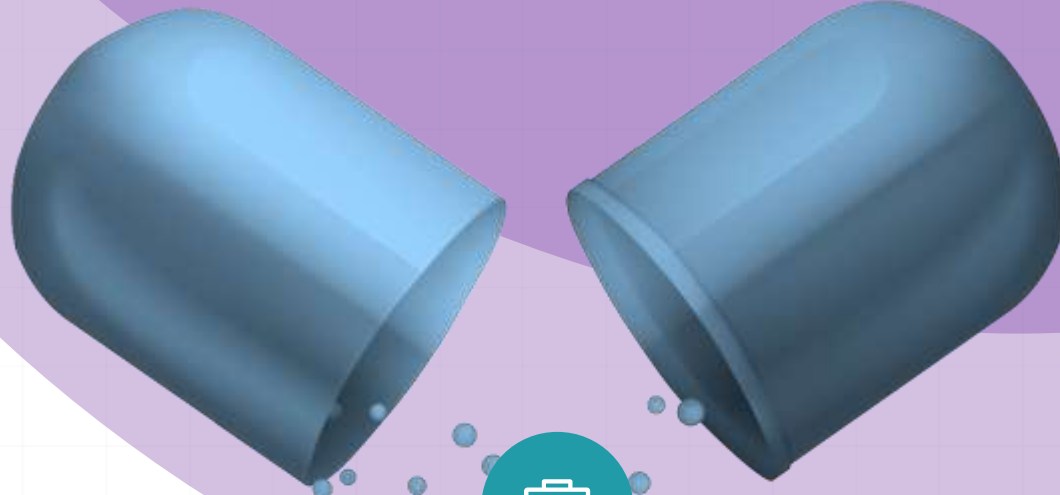
The Transformation Engine



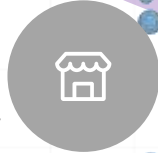
CAPABILITY



The Secret Formulas



Start with little steps



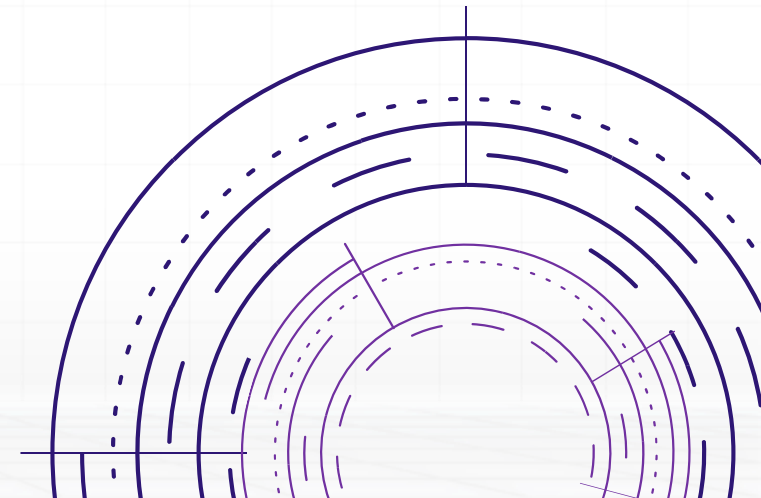
Encourage idea & creativity



Acknowledgement



Party involvement



**“FOSTERING THE ULTIMATE AUDIT RESULT IS NOT
A RECOMMENDATION, IT’S ABOUT TO MAKE IT HAPPENED**

**UNDERSTANDING AND COLLABORATION ARE
THE KEYS.**

WE CALL IT AS

AN INNOVATIVE AUDIT FUNCTION”

**ANANG BASUKI, CIA
2021**



THANK YOU

PRESENTED BY:

ANANG BASUKI, CIA

